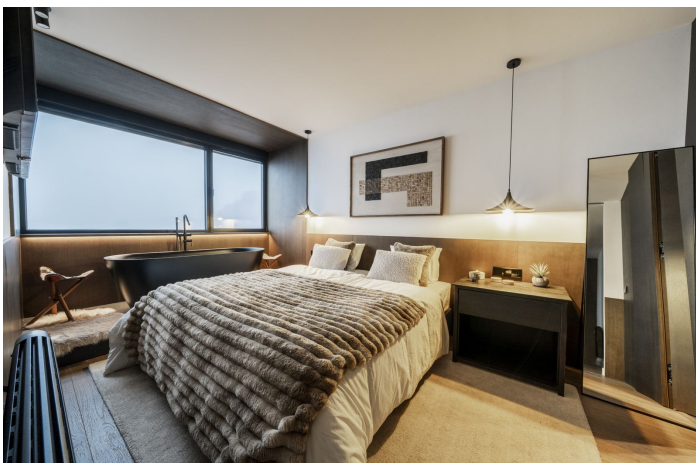




## Penthouse for sale in Monachil, Granada

699,000 €

Reference: R5143462 Bedrooms: 3 Bathrooms: 4 Build Size: 104m<sup>2</sup>







---

## Granada, Monachil

Positioned on the top floor of a modern building with elevator access, this high-specification apartment delivers a refined combination of comfort, quality, and alpine design. Natural stone, wood finishes, and unobstructed panoramic views of the Sierra Nevada establish a tranquil and practical retreat tailored for seasonal living. The interior layout has been designed to optimise both aesthetic appeal and daily functionality. Underfloor heating greets you at the entrance, where a natural stone feature wall sets a tone of understated luxury. A drying cabinet is integrated into the entryway, ideal for warming outerwear and boots after time outdoors. The open-plan kitchen and living area are custom-designed and equipped with Siemens appliances. A central island includes a cooktop and bar seating, while an ethanol fireplace enhances warmth and ambiance. Panoramic windows frame mountain views and maximise natural light throughout the living space. The property includes two bedrooms with mountain views, two full bathrooms (one featuring a custom sauna), and a guest WC. The master suite benefits from direct mountain-facing views, an en-suite bathroom, and a freestanding bathtub positioned to take in the scenery. Additional features include towel warmers in all bathrooms, radiator heating throughout, high-quality finishes, and Scandinavian-inspired design elements such as woven rugs, candles, and faux-fur textiles. The property includes private garage parking and is located just steps from the renewed El Lodge Hotel and direct ski lift access. This apartment is ideal for buyers seeking a modern, high-comfort mountain base in Sierra Nevada with immediate access to resort amenities.



## Features:

### Features

Covered Terrace  
Near Transport  
Private Terrace  
Storage Room  
Ensuite Bathroom  
Fitted Wardrobes  
Sauna  
Wood Flooring

### Views

Mountain  
Panoramic

### Furniture

Fully Furnished

### Orientation

South

### Setting

Close To Shops  
Close To Town

### Kitchen

Kitchen-Lounge

### Climate Control

Air Conditioning  
Fireplace  
Central Heating  
U/F/H Bathrooms

### Condition

Excellent

### Security

Gated Complex  
24 Hour Security  
Alarm System  
Entry Phone

### Parking

Private  
More Than One

### Category

Luxury