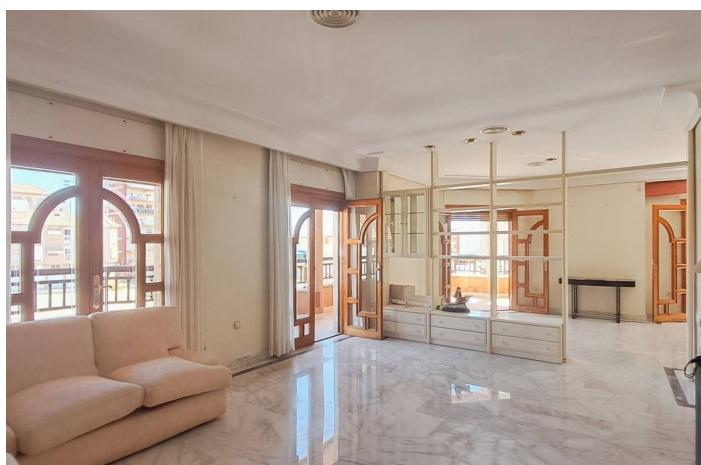
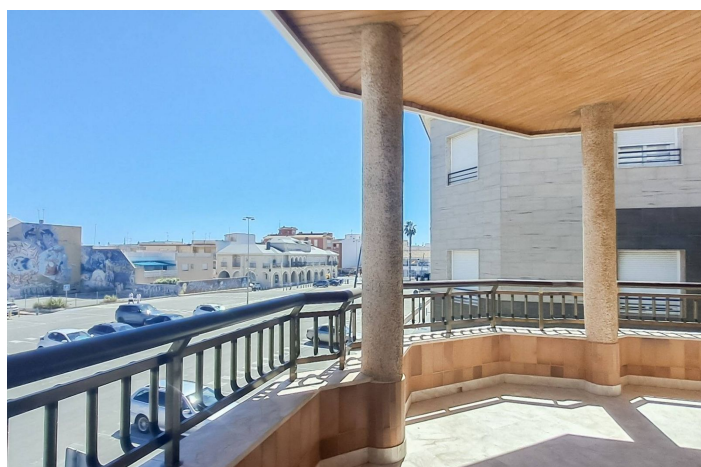
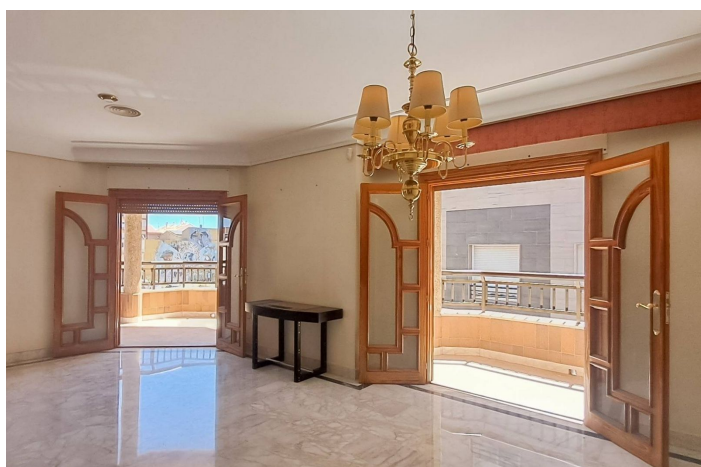




Penthouse for sale in Lo Pagan, San Javier

414 000 €

Référence: R5152297 Chambres: 6 Bain: 4 Construite: 364m²





Costa Calida, Lo Pagan

Discover this spectacular full first-floor apartment of 280 m2, located on the prestigious Avenida Emilio Castelar in San Pedro del Pinatar. This special property offers something very rare in today's market: a large, elegant home with complete privacy and generous outdoor space, all in the heart of a town that retains its Spanish soul. Whether you're looking for a full-time residence or a spacious holiday home, this duplex penthouse offers unmatched potential in an unbeatable location. The property is rich in architectural character, featuring beautifully finished wooden window frames and elegant wooden glass doors throughout, bringing light, warmth, craftsmanship, and a touch of traditional charm to the home's refined interior. This home stands out for its spaciousness, brightness, and elegance, featuring 6 bedrooms, 4 bathrooms, and unique outdoor spaces: Wrap-around balcony surrounding the entire floor Private interior patio Exclusive rooftop solarium The intricate ceiling, moldings, and door details are truly breathtakingâ€”something that photos simply cannot capture and can only be appreciated in person. Additionally, the impeccably maintained marble floors add a timeless sense of sophistication and quality that's hard to find in modern constructions. Located in one of the most sought-after areas of San Pedro del Pinatar, the property is just minutes from the Mar Menor, the Salinas Nature Reserve, and its charming promenade. Surrounded by restaurants, shops, and all essential services, this home offers both comfort and convenience in an unbeatable setting. A property with character, elegance, and exceptional value, perfect for those seeking space, exclusivity, and a superior quality of life. Book your private viewing today and experience its true charm firsthand!



Spécification:

Caractéristiques

Terrasse couverte

Salle de stockage

Sol en marbre

Solarium

Parquet

Condition

Bien

Orientation

Sud-Est

Climatisation

A / C pré-installé

Chauffage central

Meubles

Partie fournie

Cuisine

Partiellement ajusté