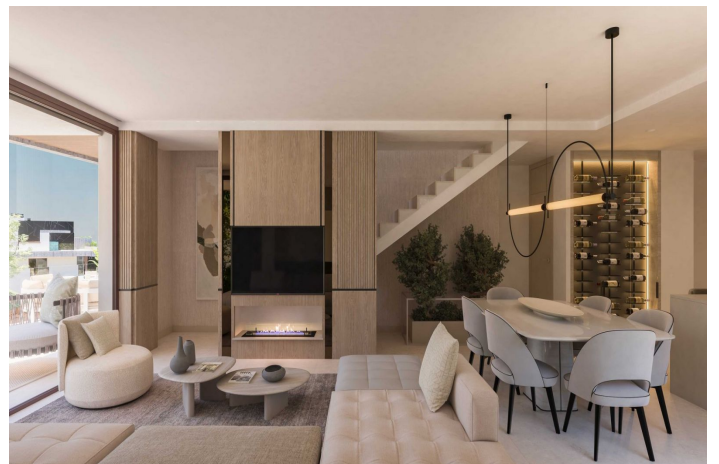




Ground Floor Apartment for sale in Marbella, Marbella 740 000 - 1 020 000 €

Référence: R5153692 Chambres: 2 - 3 Bain: 2 - 3 Construite: 212m² - 271m²





Costa del Sol, Marbella

This development is an exclusive residential complex comprised of 88 duplex apartments that combine contemporary elegance with the comfort of living in the heart of nature. The homes offer 2 and 3-bedroom configurations, and some 3-bedroom units have the possibility of incorporating an additional fourth bedroom, ideal as an office, study or guest space. Located at the top of Elviria Hill, one of the most sought-after areas of Marbella East, this development is distinguished by its serene and natural setting, surrounded by lush pine forests and open views of the mountains. This enclave is designed for those who desire a quiet life, with a Zen feeling, in harmony with the environment and away from the hustle and bustle, without sacrificing modern comforts. This development's architecture reflects a minimalist and sophisticated style, perfectly integrated with its natural surroundings. The community will offer ample green areas, walking paths, common spaces for relaxation and wellness, 4 community pools, gym and a co-working area, designed for those who value flexibility and balance between work and rest. The location of this development is exceptional. Although surrounded by nature, the complex is only: 5 minutes drive from the supermarkets, restaurants and stores of Elviria 10 minutes to the best beaches of Marbella East 15 minutes to Marbella center 30 minutes from Malaga International Airport Surrounded by several prestigious golf courses such as Santa Maria Golf, Rio Real Golf, Santa Clara Golf and Marbella Golf Country Club. This strategic location allows residents to enjoy the best of both worlds: the peace of nature and the proximity to the most emblematic services, leisure and destinations of the Costa del Sol. This development is not just a place to live. It is an invitation to reconnect with oneself, with nature and with a more conscious, modern and balanced lifestyle.



Spécification:

Caractéristiques

Terrasse couverte
Terrasse privée
Salle de bain attenante
Armoires ajustées
Solarium
Salle de sport
Buanderie

Condition

Nouvelle construction

Jardin

Communautaire
Aménagé

Vues

Montagne
Panoramique
Jardin
Cour

Piscine

Communautaire
Indoor

Sécurité

Complexe fermé
Sécurité 24 heures

Paramètre

Près du golf
Près de la mer
Proche des magasins
Près de la ville
Près des écoles
Près de Marina

Cuisine

Entièrement équipé

Catégorie

Nouveau développement