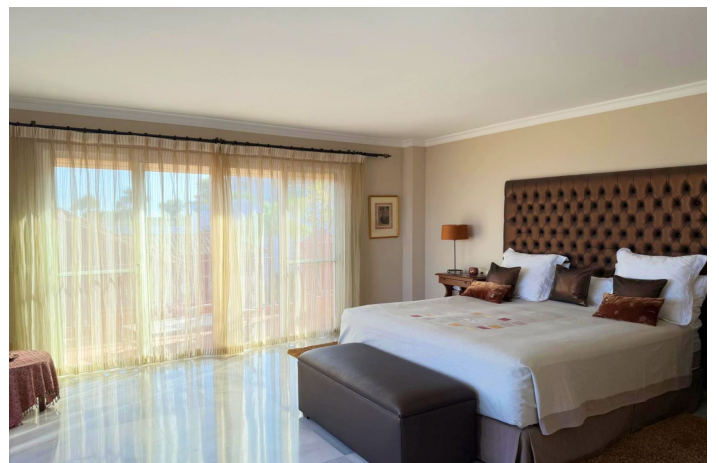




Penthouse for sale in Benahavís, Benahavís

1,150,000 €

Reference: R5156029 Bedrooms: 3 Bathrooms: 3 Build Size: 213m² Terrace: 78m²





Costa del Sol, Benahavís

Magnificent Duplex Penthouse located in the exclusive Monte Halcones development, this 3-bedroom property with all en-suites plus a guest toilet combines luxury, privacy, and spectacular views. Elevated 200 m above sea level, it enjoys fresh breezes and 180° panoramic views stretching from Marbella and La Concha to San Pedro, Atalaya, the Mediterranean, and on clear days, Morocco. Privileged location Just 10–15 minutes from San Pedro, Puerto Banús, and Marbella, with easy access to highways. Málaga Airport is 50 minutes away and Gibraltar 70 minutes. Peace and privacy close to all amenities. Exclusive and spacious Corner property with private staircase, distributed over two levels. The upper floor features the master suite with a 20 m² bathroom (spa shower, bathtub, double sink), walk-in closet, and two terraces. The lower floor offers a bright living-dining room with south and west-facing terraces, two guest bedrooms, and a service terrace. Outdoor living Expansive terraces with large windows, BBQ area, drinks fridge, and dining space for 10. Five terraces in total. Kitchen and interiors Fully fitted kitchen with granite countertops, breakfast bar, and ample storage. Interior stylishly designed by the owners with over 25 years of experience (furniture negotiable). Monte Halcones Gated community with two private pools, mature gardens, and high-quality construction. Key features: Aluminum windows and doors with double glazing, integrated shutters and mosquito screens, marble floors, electric awnings with wind sensors, fireplace, hot and cold air conditioning, filtered water system, fitted wardrobes, video intercom, high-speed Wi-Fi, five private terraces, all bedrooms en suite plus independent guest toilet, two private pools within a gated community with established gardens, and immediate outdoor parking. Ideal as a permanent residence, holiday home, or investment with high rental potential.



Features:

Features

Covered Terrace
Lift
Private Terrace
Marble Flooring
Double Glazing
Fitted Wardrobes
Solarium

Views

Sea
Mountain
Panoramic
Garden
Golf

Pool

Communal

Garden

Communal

Orientation

South

Setting

Close To Golf
Urbanisation
Close To Shops
Close To Town
Close To Schools
Close To Forest
Close To Marina

Furniture

Optional

Security

Gated Complex
Electric Blinds

Climate Control

Air Conditioning
Cold A/C
Hot A/C
Fireplace
Central Heating

Condition

Excellent

Kitchen

Fully Fitted