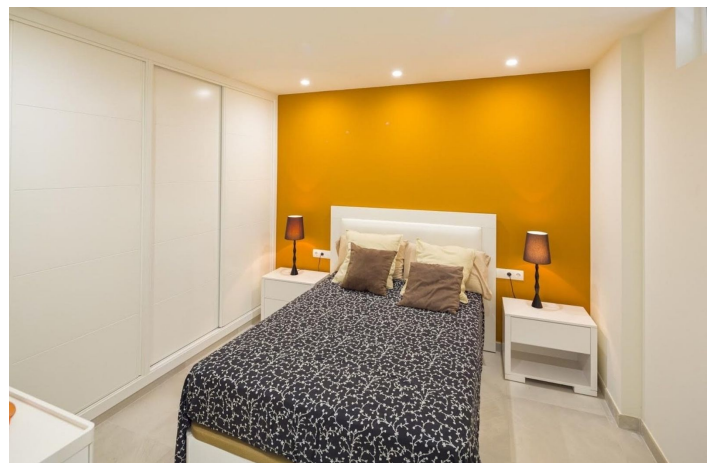




## Penthouse for sale in Nueva Andalucía, Marbella

470 000 €

Référence: R5153200    Chambres: 3    Bain: 2    Construite: 77m<sup>2</sup>





---

## Costa del Sol, Nueva Andalucía

This contemporary fully refurbished penthouse is located in the sought-after area of La Dama de Noche, Nueva Andalucía, walking distance to Puerto Banus and the beaches. Offering 3 bedrooms and 2 bathrooms, the property is ideally situated close to a range of amenities, including shops, schools, transport links, the beach, golf courses, and the town centre. The penthouse is set within a gated community, featuring a doorman and surveillance cameras, ensuring a secure and peaceful environment. The property boasts a generous built area of 77m<sup>2</sup>, recently renovated to a high standard and beautifully presented. The interior layout includes a spacious living room and dining room, complemented by an open plan, fully fitted and equipped kitchen. The guest rooms provides additional flexibility, while fitted wardrobes offer ample storage throughout. Double glazing, electric blinds, and air conditioning contribute to comfort and energy efficiency, and security features such as security entrance, and security shutters providing peace of mind. The penthouse also benefits from a private garage space in the underground and secure car park. This complex offers large landscaped gardens with sports facilities, paddle tennis courts, children's playground, lovely walk ways and paths with seating areas, and 2 lagoon-style swimming pools. 24hrs security service. next to La Dama de Noche golf course. With its proximity to children's playgrounds, the famous Puerto Banus, and all essential amenities, this penthouse is exceptionally well positioned for both families and professionals. The combination of modern features, security, and convenience makes it a desirable choice for those seeking a stylish home in Marbella's vibrant Nueva Andalucía area.



## Spécification:

### Caractéristiques

Ascenseur  
Près du transport  
Sol en marbre  
Double vitrage  
Armoires ajustées  
Paddle tennis

### Vues

Montagne  
Jardin

### Piscine

Communautaire

### Jardin

Communautaire

### Cote d'énergie

F

### Orientation

Sud-ouest

### Paramètre

Près du golf  
Près du port  
Près de la mer  
Proche des magasins  
Près de la ville  
Près des écoles

### Meubles

Optional

### Sécurité

Complexe fermé  
Système d'alarme  
Stores électriques

### Cote d'émission de CO2

F

### Climatisation

Climatisation

### Condition

Bien  
Récemment rénové

### Cuisine

Partiellement ajusté

Cloison

### Parking

Private