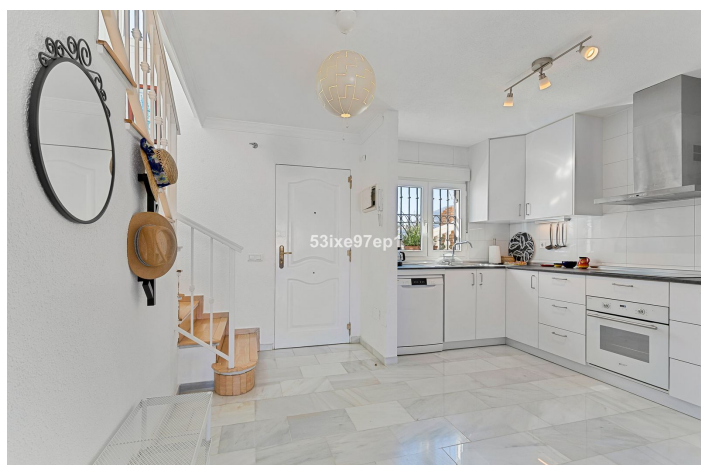
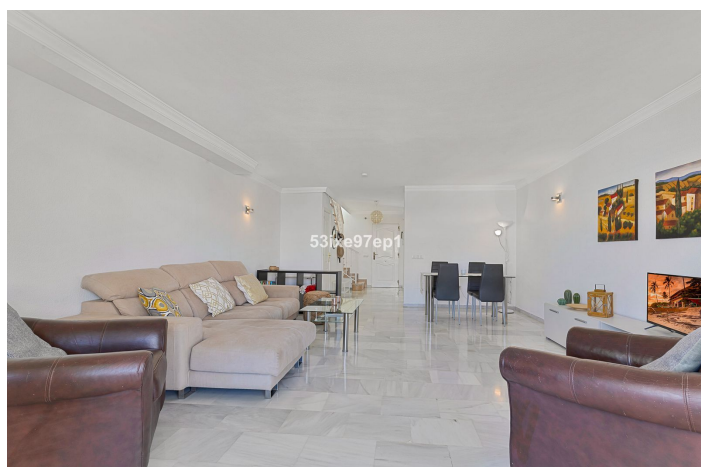
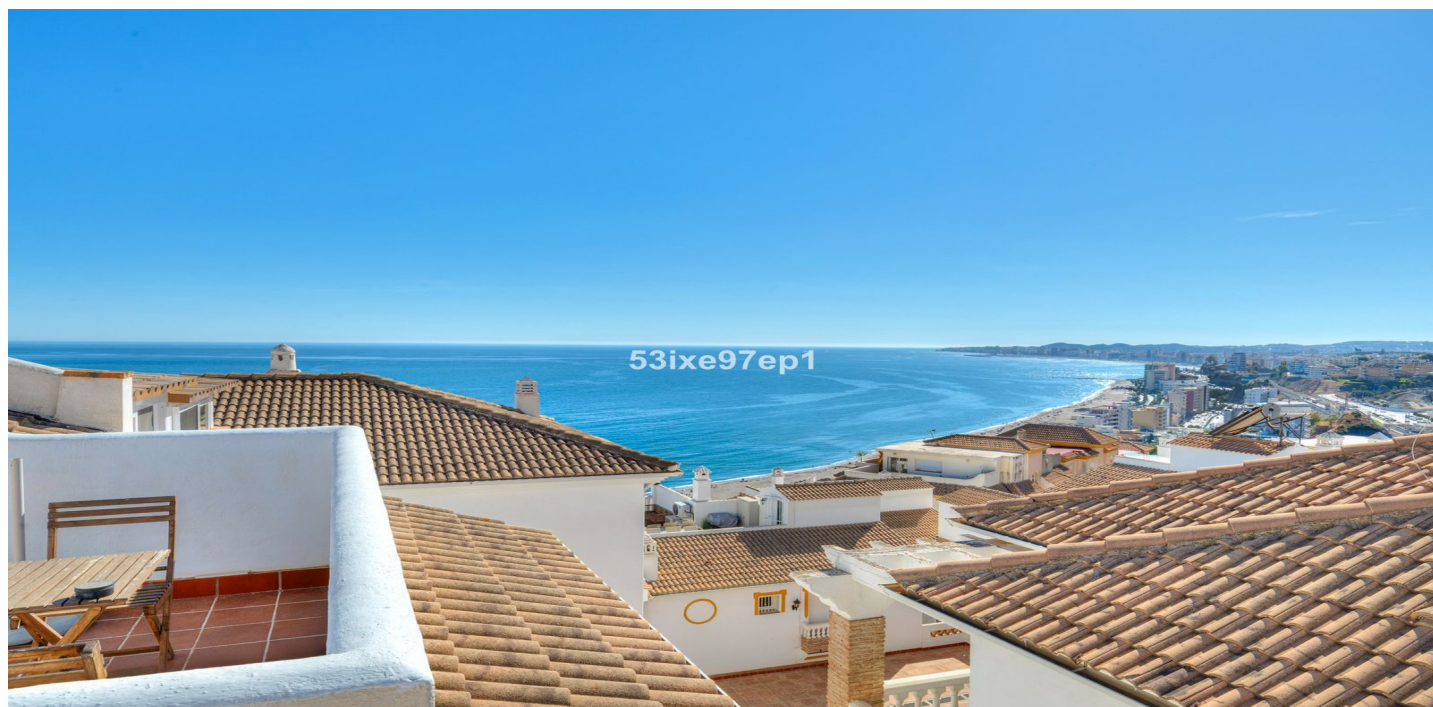




Townhouse for sale in Benalmadena Costa, Benalmádena

519 000 €

Référence: R5183077 Chambres: 2 Bain: 2 Construite: 97m² Terrasse: 21m²





Costa del Sol, Fuengirola

Welcome to this lovely townhouse in a quiet area with fantastic sea views of the entire beach and the port of Fuengirola from the roof terrace!

On the entrance floor we find directly to the left the renovated, fully equipped and open kitchen with views of the mountains. Straight ahead we come to a spacious living room with plenty of space for both a dining area and a sofa group. From here we come out to a spacious terrace facing east, which is why it can be used with advantage even during the hottest summer months. On this floor we also find a lockable storage room.

Upstairs are the two bedrooms, of which the master bedroom has its own bathroom en suite where the washing machine is and its own terrace, also facing east, with beautiful views down to the sea.

Another flight of stairs leads to the roof terrace facing west with a magical view down to the entire coastline of Carvajal/Torreblanca/Los Boliches and Fuengirola and towards the mountains to the northwest.

There is also a spacious storage room here for cushions etc. and which could be converted into an outdoor kitchen.

The community offers a very nice green area and a community pool.

The townhouse also comes with a parking space in the garage.

The house is located above the wonderful and wide beach in Carvajal where the beach restaurants La Cubana and Kalifato offer fantastic food and drinks to the bathers.

It is a five-minute walk down to the beach. The train station in Carvajal is about 15 minutes away and the bus stop is 10 minutes away.

Nearby we also find a gas station and a small supermarket.



Spécification:

Caractéristiques

Terrasse couverte
Près du transport
Terrasse privée
Salle de stockage
Salle de bain attenante
Sol en marbre
Double vitrage
Armoires ajustées
Solarium
Buanderie
Fibre optique

Vues

Mer
Montagne
Plage

Piscine

Communautaire

Jardin

Communautaire

Services publics

Électricité

Cote d'émission de CO2

E

Orientation

Est
Ouest

Paramètre

Urbanisation
Près de la mer

Meubles

Entièrement meublé

Sécurité

Complexe fermé
Téléphone d'entrée

Catégorie

Revente

Climatisation

Climatisation
Cold A / C
A / C chaud

Condition

Excellent

Cuisine

Entièrement équipé

Parking

Souterrain
Garage
Covered

Cote d'énergie

E