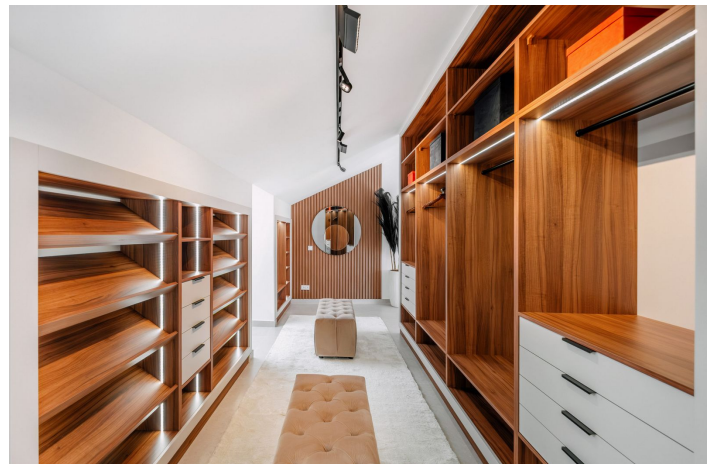




Penthouse for sale in Nueva Andalucía, Marbella

1 895 000 €

Référence: R5134966 Chambres: 5 Bain: 8 Construite: 389m² Terrasse: 84m²





Costa del Sol, Nueva Andalucía

Las Lolas, Nueva Andalucía – Penthouse Located in the quiet residential setting of Las Lolas, this fully renovated duplex penthouse offers space, light, and comfort in one of Nueva Andalucía's most sought-after areas. The location is exceptional – walking distance to all amenities, including Puerto Banús, and with direct access to the new coastal walkway leading to the beach. The property enjoys open views of La Concha and the surrounding greenery. The refurbishment, completed in 2025, combines natural materials, walnut wood details, and warm lighting to create a calm, modern interior. The main floor features an open-plan living and dining space with a well-equipped kitchen, including Siemens appliances, a stone island, double fridge, integrated wine cooler, and a separate butler's pantry. There are five bedrooms and five bathrooms in total, with the main suite offering its own terrace, walk-in wardrobe, and a private bathroom finished to a high standard. Terraces and balconies wrap around the property, giving a choice of sun or shade throughout the day and plenty of space for outdoor dining or simply enjoying the views. Comfort has been considered year-round, with underfloor heating, three independent Daikin air conditioning systems, double-glazed thermal break windows, a water filtration system, and a full alarm with video surveillance. A double garage is also included. The Las Lolas development is well maintained, with landscaped gardens and a large swimming pool. Community fees are around €329 per month. The location offers easy access to international schools, restaurants, shops, golf courses, and the beach. Short-term rentals are allowed, adding investment potential alongside its appeal as a permanent or holiday home.



Spécification:

Caractéristiques

Près du transport

Vues

Mer

Montagne

Urban

Rue

Piscine

Communautaire

Jardin

Communautaire

Orientation

Sud

Paramètre

Près du port

Près de la mer

Proche des magasins

Près de la ville

Près des écoles

Meubles

Entièrement meublé

Optional

Parking

Private

Plus d'un

Climatisation

Climatisation

Condition

Excellent

Nouvelle construction

Cuisine

Partiellement ajusté

Cloison

Catégorie

Luxe