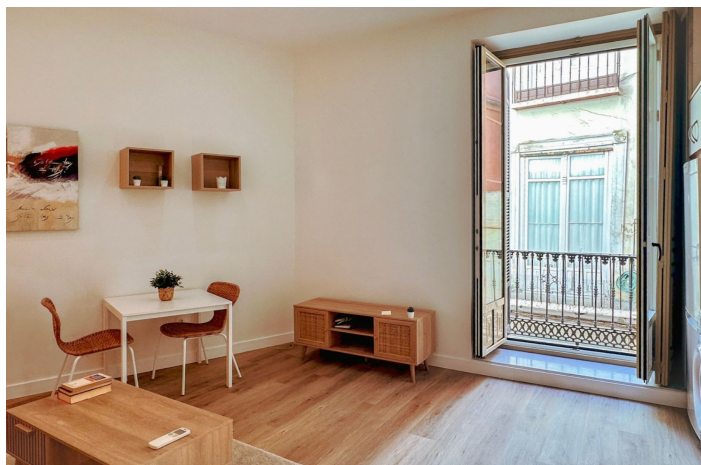
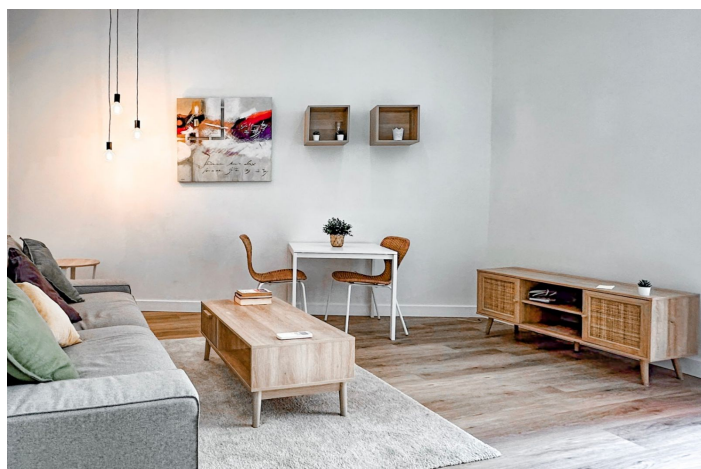
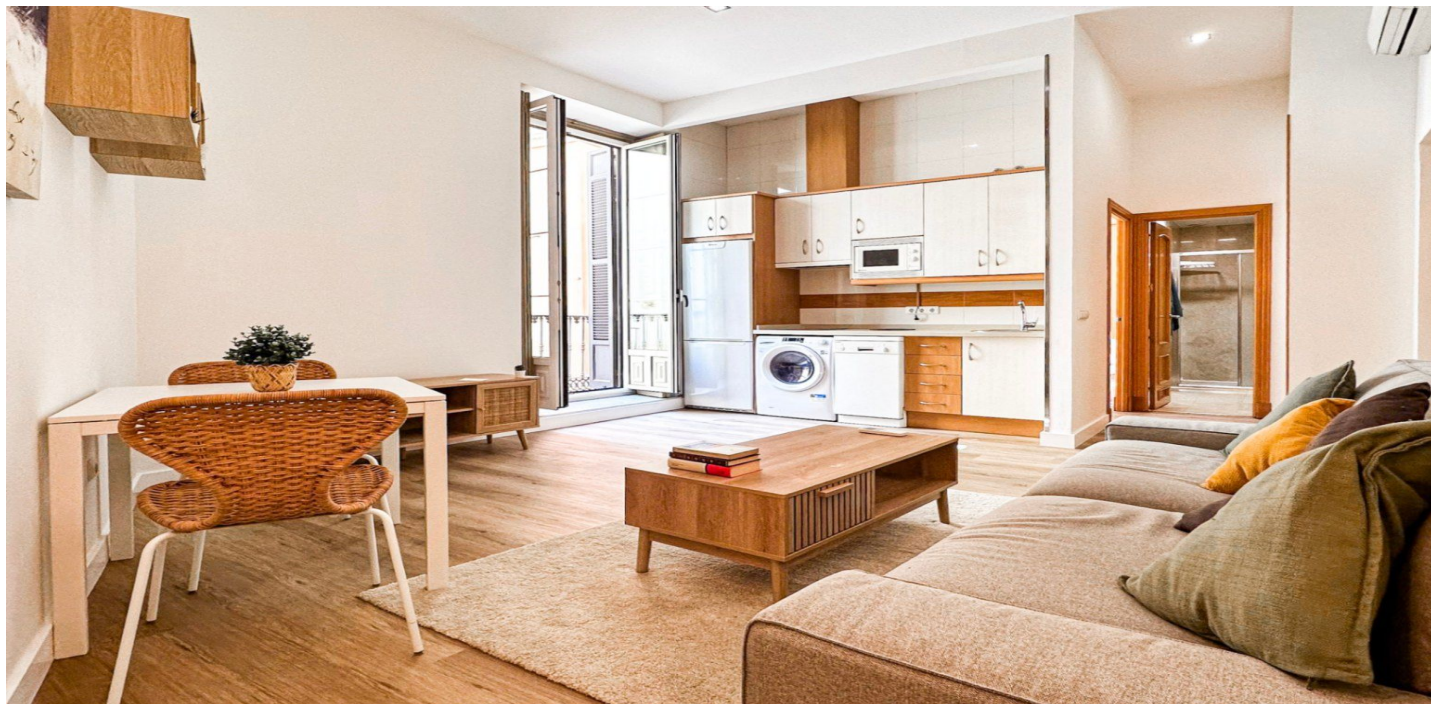




Ground Floor Apartment for sale in Málaga, Málaga

415,000 €

Reference: R5190244 Bedrooms: 1 Bathrooms: 1 Build Size: 58m²





Costa del Sol, Málaga

Charming home in the historic heart of Málaga, located in one of the city's most iconic areas, between Marqués de Larios street and the Cathedral, just a few meters from both. The property is part of a traditional Málaga building constructed in 1890 and fully renovated in 2006, combining classic charm with modern comfort. It is situated on a quiet pedestrian street that retains its charm with original cobblestone pavement. The building stands out for its façade with balconies and typical closures of local architecture, as well as its elegant entrance gate. Inside, original details have been preserved, such as the wrought iron railings and part of the old hydraulic flooring, while the panoramic stainless steel elevator adds a modern touch. From the communal rooftop terrace, residents can enjoy spectacular views of the Cathedral and the Gibralfaro Castle. The apartment is located on the first floor and offers a functional and bright layout: a spacious living-dining room with a fully equipped open kitchen and access to a balcony, a spacious bedroom with a second balcony and a large built-in wardrobe, as well as a modern bathroom with a shower. In the hallway, there is another built-in wardrobe, both lined internally with wood. The interior features high ceilings over 3 meters, natural brightness, and a careful blend of original elements and recent renovations. It has new aluminum joinery with acoustic double glazing, while the interior wooden closures and original Venetian railings add character and warmth. The floors have been renovated with oak-effect laminates, the walls are smooth, and the false ceilings are made of plaster. The apartment is equipped with hot/cold air conditioning in both the living room and bedroom. Just a few steps away, there is a wide range of shops, restaurants, museums, and places of cultural interest.



Features:

Features

Lift

Near Transport

Views

Urban

Orientation

East

Setting

Close To Shops

Close To Town

Climate Control

Air Conditioning

Kitchen

Fully Fitted