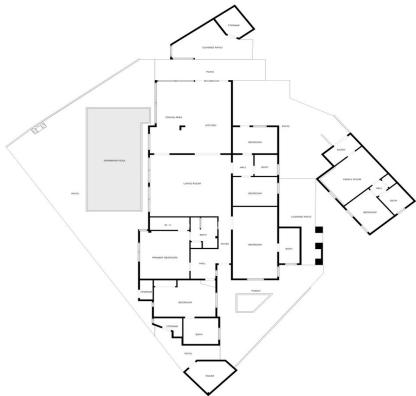




## Detached Villa for sale in Torremolinos, Torremolinos

915.000 €

Referenz: R5235265 Schlafzimmer: 5 Badezimmer: 5 Grundstücksgröße: 754m<sup>2</sup> Garten: 288m<sup>2</sup>



Strand Properties®

FLOOR PLAN CREATED BY CUBICASA APP. MEASUREMENTS DEEMED HIGHLY RELIABLE BUT NOT GUARANTEED.





---

## Costa del Sol, Torremolinos

Discover this magnificent single-storey detached house located in El Pinillo, just 7 minutes' walk from the Cercanías train station, Mercadona, Carrefour, and a full range of services. Set in a quiet, family-friendly area with south-facing orientation, the home enjoys natural light throughout the day. The main house offers 4 bedrooms (with the option to convert the current laundry room into a fifth bedroom) and a total of 4 bathrooms, 3 of them en-suite. The heart of the property is its spacious open-plan living room with a fully renovated and equipped kitchen. Large windows surround the entire living and kitchen area, providing abundant natural light and direct views of the surrounding terraces and the impressive 42 m<sup>2</sup> private swimming pool with built-in steps. The property boasts extensive terraces and covered porches, perfect for enjoying the Mediterranean climate, as well as 3 storage rooms. It also counts with solar panels. An independent apartment completes this exceptional property, featuring a living room, kitchen, bedroom, bathroom, wardrobe, and its own storage area, ideal for guests, family, or rental use. A unique opportunity to live in a quiet, well-connected residential area with a bright south orientation. Ready to enjoy from day one!



## Eigenschaften:

### Merkmale

In der Nähe des Transports

Private Terrasse

Lagerraum

Badezimmer

Einstellungsschränke

Solarium

Gastwohnung

Versorgungsraum

Grill

### Einstellung

In der Nähe des Hafens

In der Nähe von Geschäften

In der Nähe der Stadt

In der Nähe von Schulen

### Klimakontrolle

Klimaanlage

### Pool

Privat

### Ansichten

Pool

Urban

### Sicherheit

Elektrische Jalousien