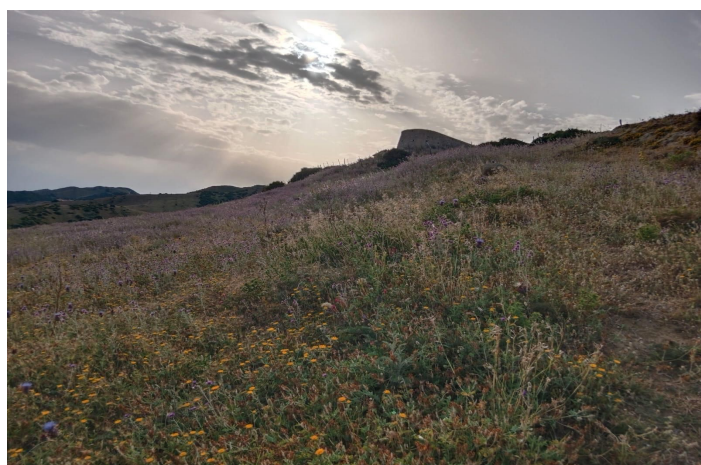
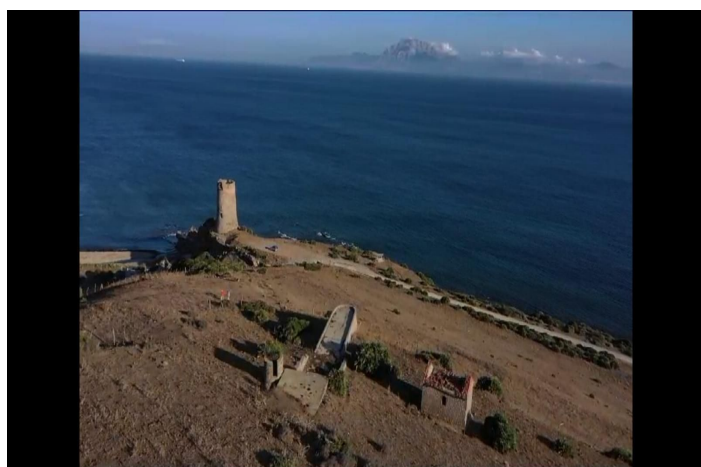




Land for sale in Tarifa, Tarifa

1 060 000 €

Référence: R5237368 Terrain: 117 543m²





Costa de la Luz, Tarifa

- The Strait Sanctuary: Exclusive Estate with 400m of Sea Frontage in Tarifa A once-in-a-lifetime opportunity on the frontline of the Strait of Gibraltar. Immerse yourself in a retreat where the Atlantic and the Mediterranean converge. This exceptional estate not only borders the sea but offers a breathtaking 400-meter coastal front, ensuring priceless privacy and views that are simply unparalleled. - A 180° View Spectacle Imagine waking up every day to unobstructed panoramic views spanning over 180 degrees: the coast of Africa within reach, the historic Tarifa Lighthouse, and the silhouette of the Torre del Fraile. With the main house elevated 50 meters above sea level, and a third construction at 90 meters, you will enjoy a unique and absolutely protected perspective. - Pure Nature in the Strait Natural Park This property is nestled within the Strait Natural Park and is part of the Biosphere Reserve. This guarantees an unmatched environmental quality and the maximum urban protection of its surroundings. This is an investment in quality of life, exclusivity, and heritage. Immediate Access to the Sea: Less than 50 meters from the estate entrance. Safety and Morphology: The natural elevation of the land (from 4m up to 90m above sea level) eliminates the risk of flooding or landslides. Connectivity: Direct access without easements via the Colada de la Costa and the Vía Pecuaria de los Alelíos. - Renovation Potential and Exclusivity The estate features three existing constructions (around 300m² in total, including concrete terraces) with renovation possibilities. Shape the villa of your dreams in this privileged setting, with the added peace of mind of having a mains water supply. Are you searching for a piece of paradise where nature, luxury, and history unite? Contact us to discover a property that is much more than an estate—it is a legacy.



Spécification:

Vues

Mer

Montagne

Pays

Plage

Paramètre

En bord de mer