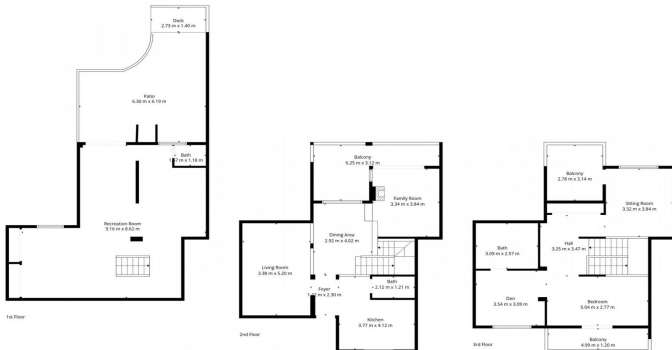




Townhouse for sale in Monda, Monda

349 000 €

Référence: R5248144 Chambres: 3 Bain: 2 Construite: 237m² Terrasse: 32m²



TOTAL: 194 m²
 1st floor: 64 m², 2nd floor: 66 m², 3rd floor: 64 m²
 EXCLUDED AREAS: PATIO: 33 m², DECK: 4 m², BALCONY: 28 m², WALLS: 16 m²

Floor Plan Created By Cidre & Kipp. Measurements Provided Highly Reliable But Not Guaranteed.





Sierra de las Nieves, Monda

Upon entering, you'll find a split-level living and dining area with a cozy fireplace, a fully fitted kitchen, and a guest toilet. From the living room, you have direct access to a lovely terrace with beautiful views—perfect for enjoying morning coffee or evening sunsets. Originally, the area by the entrance served as a private garage, but it now functions as a showroom/lounge. This versatile space could easily be transformed into an additional bedroom, a home office, or a snug TV room. The current owner has thoughtfully redesigned the entrance level to create an open, light-filled layout that allows natural brightness to flow throughout the home. Upstairs, the property features an exceptionally large master suite that could be reconfigured into up to three bedrooms simply by adding room dividers. A second bathroom could also be installed if desired. This level offers two inviting terraces—one for sun, one for shade—both with pleasant views of the surrounding landscape. A standout feature of this townhouse is the expansive semi-basement, currently used as a creative studio. The possibilities here are endless: a hobby or craft room, dance studio, private guest quarters, cinema room, or a spacious home office. From this level, you enjoy access to a generous garden patio, ideal for entertaining, outdoor dining, and BBQ gatherings. The house forms part of a well-kept community with a friendly international atmosphere, offering a welcoming environment to residents of all backgrounds. This townhouse is an excellent choice for those seeking a peaceful retreat with authentic Andalusian charm, yet within walking distance to Monda's amenities and just a short drive from Marbella and the coast. Perfect as a permanent residence, holiday home, or investment opportunity.



Spécification:

Caractéristiques

Près du transport

Terrasse privée

Armoires ajustées

Sous-sol

Vues

Montagne

Panoramique

Pays

Jardin

Jardin

Communautaire

Orientation

Sud

Paramètre

Proche des magasins

Près de la ville

Près des écoles

Parking

Private

Climatisation

Climatisation

Cheminée

Meubles

Optional

Services publics

Électricité