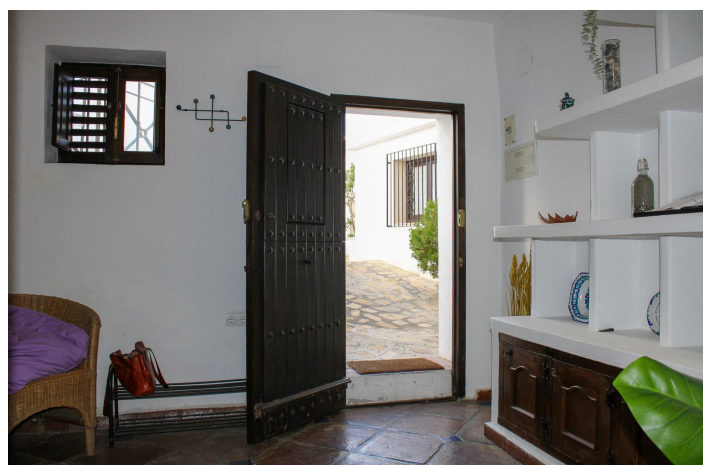




Townhouse for sale in Salobreña, Salobreña

220 000 €

Référence: R5250604 Chambres: 2 Bain: 2 Construite: 115m²





Costa Tropical, Salobreña

Charming well-kept townhouse with spectacular views in the old part of the magical white coastal village of Salobreña, nestled between the green mountains and the blue sky and the Mediterranean Sea - an idyllic place that has it all. Perfect for renting, license available. The house is sold fully furnished, just bring your bags. The house has 2 bedrooms and 2 bathrooms and is divided into three floors, a spiral staircase connects the different levels. A spacious entrance hall welcomes us and on this floor, there is also a bedroom with en suite bathroom. We go up to the next floor and come to a furnishable hall, which currently serves as a living room and has a French balcony with views of the beautiful castle of Salobreña. Here you also have a large bedroom with a French balcony, as well as a bathroom with shower. On the next floor you have a spacious fully equipped kitchen with dining area, with a terrace outside. We go up to the jewel in the crown, a wonderful roof terrace with pergola and awnings. Here you have a 360-degree view of Salobreña town, the castle, the church, the beautiful mountains of Sierra Nevada and the Mediterranean Sea. This house must be experienced on site, book a viewing with us today. Salobreña has a subtropical climate and is located between Almuñécar and Motril, it takes just under 20 minutes in either direction to each town. Motril is a significantly larger city and there are more public services here, including a large hospital. To an 18-hole golf course, it takes just under 15 minutes by car. To Malaga airport it takes just over an hour by car, there are also regular bus trips from Malaga to Salobreña. During the winter months you only have an hour and a half drive to Granada and skiing in Sierra Nevada, the best of both worlds.



Spécification:

Caractéristiques

Près du transport
Terrasse privée
Salle de stockage
Salle de bain attenante
Solarium

Condition

Bien

Parking

Rue

Vues

Mer
Montagne
Panoramique
Pays

Meubles

Entièrement meublé

Catégorie

Revente

Paramètre

Près du golf
Près de la mer
Proche des magasins
Près de la ville
Ville
Près du ski

Cuisine

Entièrement équipé