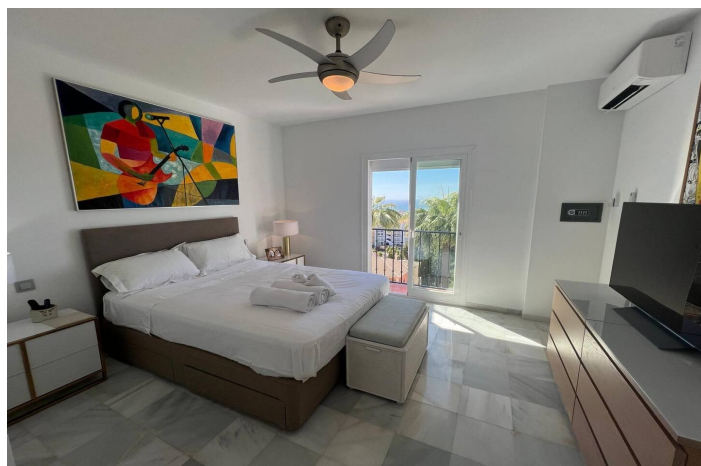




Penthouse Duplex for sale in Mijas Costa, Mijas

725 000 €Réf rence: R5257222 Chambres: 4 Bain: 3 Construite: 150m² Terrasse: 29m²



Costa del Sol, Mijas Costa

Renovated duplex penthouse, finished with exclusive luxury materials!! The duplex penthouse enjoys a great location between Fuengirola and Marbella, offering easy access to both towns. It features beautiful views of the sea and the mountains, creating a stunning backdrop for everyday living. Just a one-minute walk from two popular restaurants, Miel y Nata and The Family, as well as the vibrant Millennium Bar & Nightclub. It's also only a few minutes away from well-known beach destinations such as Max Beach (2.5 miles), Cabopino Beach (1.5 miles), and Marbella center (9 minutes by car). This penthouse has been fully upgraded with top-quality materials and features: - A brand-new Porcelanosa kitchen with modern electrical installations - Two new Porcelanosa bathrooms and a guest toilet, all with updated electrics - New aluminum sliding doors on the first floor - Professional plastering of three bedrooms and the living room - Four terraces, all treated with Capafinad - Three new air conditioning units - A new large water heater for the master bathroom A total renovation investment of approximately €120,000 Spread over two floors, the penthouse includes: - Three double bedrooms with sea and mountain views, including a master bedroom with en-suite - Four private terraces with sun from morning to evening - Two spacious TV rooms, each equipped with Smart TVs (three in total) - Two dining areas for both formal and casual dining This penthouse offers a rare combination of peace, privacy, and close proximity to Marbella's best attractions. A unique opportunity for anyone seeking luxury and comfort on the Costa del Sol.



Spécification:

Caractéristiques

Près du transport

Terrasse privée

Sol en marbre

Double vitrage

Wifi

Appartement

Fibre optique

Vues

Mer

Panoramique

Jardin

Piscine

Piscine

Communautaire

Sécurité

Complexe fermé

Orientation

Sud-ouest

Paramètre

Près du golf

Près de la mer

Proche des magasins

Près de la ville

Meubles

Entièrement meublé

Parking

Communautaire

Climatisation

Climatisation

Cheminée

Condition

Excellent

Nouvelle construction

Jardin

Communautaire

Catégorie

Luxe