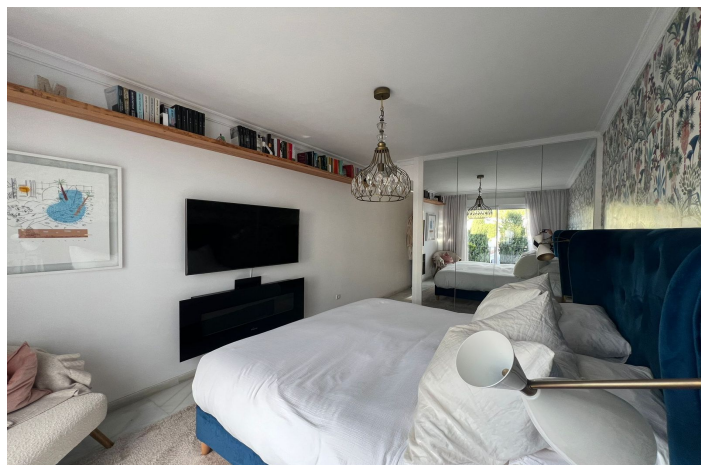




Penthouse for sale in Nueva Andalucía, Marbella West

439,000 €

Reference: R5261053 Bedrooms: 2 Bathrooms: 2 Build Size: 110m² Terrace: 20m²





Costa del Sol, Nueva Andalucía

Stunning Recently Renovated Penthouse in Señorío de Gonzaga, Nueva Andalucía – Marbella Indulge in this beautifully refurbished penthouse, bathed in natural light from morning to evening thanks to its prime position in the exclusive Señorío de Gonzaga urbanisation, nestled in Nueva Andalucía's renowned Golf Valley. Built in 2003, this gated community of 214 apartments across 22 blocks offers a serene retreat with Andalusian charm, private staircases for added privacy, and easy access to world-class golf courses like Los Naranjos, Aloha, and Las Brisas. Just a short drive from the glamorous Puerto Banús marina, pristine beaches, and Aloha's vibrant shops, restaurants, and cafés, it's perfectly situated for a luxurious coastal lifestyle near Turtle Lake and Marbella's amenities. Boasting breathtaking views of the iconic La Concha mountain, this south, east, and west-facing property features two spacious bedrooms with built-in wardrobes – the master with a newly reformed en-suite bathroom, and a second full bathroom. The brand-new open-plan kitchen, fitted with top-quality appliances (fridge, dishwasher, washer-dryer, oven/microwave), seamlessly integrates with the living area, all finished with elegant marble flooring throughout. Step onto the southeast-facing terrace, complete with automatic irrigation for planters, ideal for al fresco dining and soaking up the sun. Enjoy year-round comfort with a newly installed air conditioning system featuring Airzone technology, controllable per room via remote or smartphone. The well-maintained urbanisation includes three communal swimming pools, lush landscaped gardens, and dedicated maintenance services. A numbered parking space is included. Priced at €439,000 – an exceptional opportunity for modern living in one of Marbella's most desirable areas!



Features:

Features

Covered Terrace
Near Transport
Private Terrace
Ensuite Bathroom
Marble Flooring
Double Glazing
Fitted Wardrobes
WiFi
Near Church
Fiber Optic

Views

Mountain
Panoramic
Garden
Courtyard

Pool

Communal
Children`s Pool

Garden

Communal

Orientation

East

Setting

Commercial Area
Close To Golf
Urbanisation
Close To Shops
Close To Town
Close To Schools

Furniture

Optional

Security

Gated Complex

Climate Control

Air Conditioning
Fireplace

Condition

Excellent

Kitchen

Fully Fitted

Parking

Private