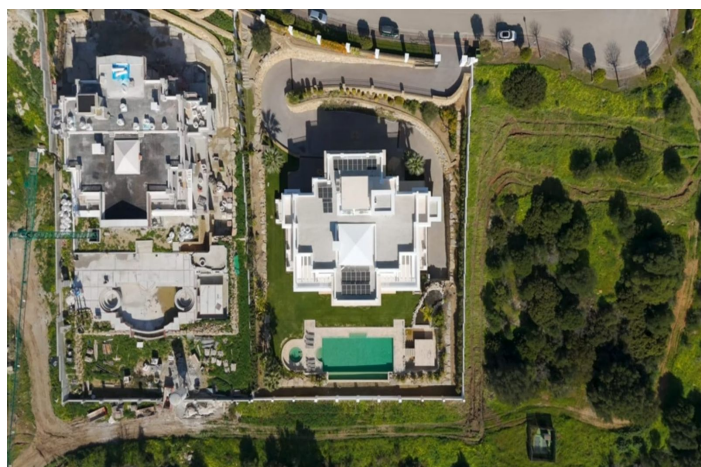




Residential Plot for sale in Sotogrande, Sotogrande

820.000 €

Referentie: R5272231 Plotgrootte: 2.000m²





Costa de la Luz, Sotogrande

Plot for sale in Sotogrande – Lavanda Area, reference Lavanda We have 4 plots priced from €785,000 to €1 million

Plot n1 urban of 3,376 m² located in one of the most exclusive areas of Sotogrande, with a buildability of 844 m² computable. Price: €785,000 + 21% VAT. Plot n2 2690m² (buildability 672.5m² computable) €850,000 + 21% VAT

Plot n3 in Laurel 2000m² (buildability 500m² computable) building permit in force - €920,000 + 21% VAT Plot n4 Altos de Valderrama 2100m² (buildability 693m²) - €1,000, 000 + 21% VAT

The plot has a real south orientation, ideal for the design of a bright and efficient home, and access from the northern boundary, an optimal arrangement for high-level residential projects. Elevated land, which guarantees privacy and excellent views. It is part of a set of 4 plots available:

- 1 plot with building permit, execution project, favorable geotechnical study and topographic survey.
- 2 plots with basic project, favorable geotechnical and topographic studies.
- 1 plot with preliminary project, completely flat, with 4 test pits up to 4 meters deep that confirm the absence of fillings or defective terrain. One of the plots directly borders a golf course and three of them enjoy open views of the sea and the golf course, to varying degrees.

All are surrounded by high-standing homes, with neighbors whose properties exceed 5 million euros. Two plots are completely consolidated and the other two are practically consolidated. Privileged location in Sotogrande, close to internationally renowned golf courses such as Valderrama and La Reserva, the marina, beaches, international schools, restaurants and all essential services. A quiet, exclusive and safe environment, ideal for developing a luxury villa. Exceptional opportunity for both developers and end clients looking to build a unique home in one of the best residential areas in southern Europe.



Kenmerken:

Uitzicht

Zeezicht

Golf Bekeken

Port Bekeken

Categorie

Investering

Ligging

Dichtbij stad

Dichtbij jachthaven

Huidige Staat

Uitstekende conditie