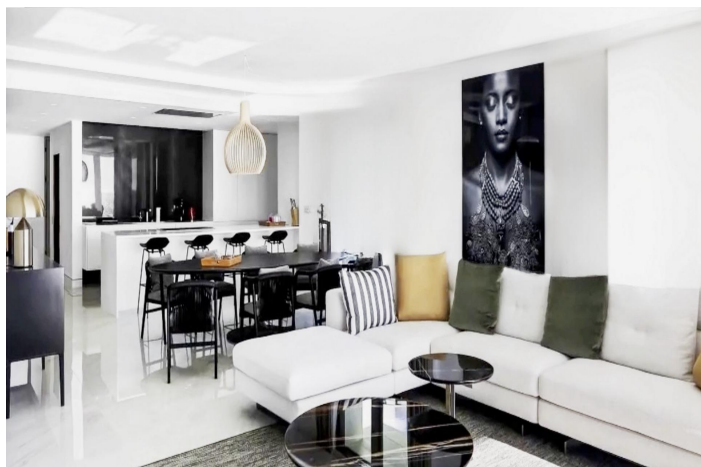




Penthouse for sale in Relleu, Relleu

228,000 €

Reference: SP0674 Bedrooms: 3 Bathrooms: 2 Build Size: 128m² Terrace: 32m²





Costa Blanca South, Relleu

NEW BUILD RESIDENTIAL IN RELLEU New Build residential in Relleu is the ideal place for those who want to have a quality home in a very beautiful place and with all services next door. The building has 7 floors with 2 stairs and its 2 elevators. In the basement there are 69 parking spaces and 42 storage rooms. On the ground floor is the heated indoor pool, a large room for the use of all owners and two commercial premises, on the roof is the outdoor pool with its terraces. Enjoy cooking in a modern kitchen and also the living rooms with stunning views, and relax on the spacious terrace overlooking the breathtaking nature of Relleu. From the terraces there are spectacular, completely unobstructed views. The beautiful mountains, the new lake and the sports areas of the town are beautiful. The orientation is south-east so all the terraces have sun from early in the morning until early in the afternoon. Watching the sunrise from your terrace can be a wonderful experience. An options underground parking space and storeroom at an extra cost. Relax - Pool: Dive into an oasis of serenity and leave the daily stress behind as you swim laps in our refreshing pool. - Sauna: Let go of all tension and indulge in the bliss of our luxurious sauna. The soothing heat relaxes your muscles and purifies your mind, leaving you feeling completely rejuvenated after each session. Work-Out - Gym: Achieve your fitness goals without leaving the comfort of your home. Our state-of-the-art fitness centre is equipped with the latest equipment, giving you the freedom to train at your own pace and in your own way. Whether you're seeking an intense workout, a relaxing swim session, or just a moment of peace and reflection, our apartment complex offers everything you need for a balanced lifestyle. Relleu is a beautiful and quiet mountain town where people of different nationalities live. Relleu is 15km from the Mediterranean highway, 18km from Villajoyosa beach and 25km from Benidorm beach. The village of Relleu is the perfect place for lovers of mountain, cycling, hiking, canyoning or other sports. The swamp route with its famous footbridge reaches the same building. These mountains are the ideal environment for riding a motorcycle or bicycle.



Features:

Features

Gym

Beach: 14000 Meters

Parking - Space

Near Commercial Center

Communal Pool

Gated

Near Schools

Double Bedrooms: 3

Air Conditioning: Yes

Elevator/Lift

Location: Coastal, Rural, Urbanisation

Terrace: 32 Msq.

Useable Build Space: 121 Msq.

Energy Rating

B

CO2 Emission Rating

B