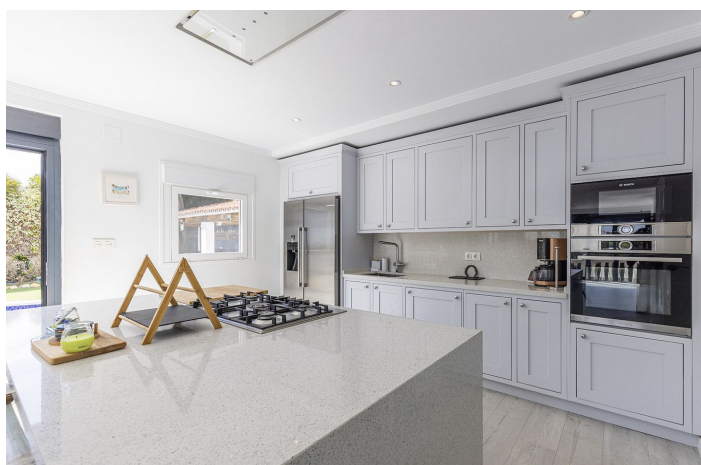




Bungalow for sale in Manilva, Manilva

935 000 €

Référence: R5293453 Chambres: 4 Bain: 4 Terrain: 970m² Construite: 271m² Terrasse: 29m²





Costa del Sol, Manilva

This beautifully renovated detached villa in Jardin Tropical offers the perfect blend of comfort, elegance, and Mediterranean charm. Set on a generous plot of over 900 m², the home sits on the upper tier of the land, enjoying breathtaking panoramic sea views. The property has recently undergone tasteful renovations, combining modern finishes with the warmth of traditional Andalusian design. Inside, you'll find four spacious bedrooms, two with en suite bathrooms, plus an additional family bathroom in the hallway. There is also a cinema, or extra living room for added convenience. The bright and airy living area opens onto an extended conservatory-style terrace that captures sunlight from sunrise to sunset. It's the perfect space to relax, dine al fresco, or entertain year-round while enjoying the views and natural light. Outside, the villa truly shines with its private swimming pool, outdoor bar, and summer kitchen—creating a wonderful setting for gatherings or simply unwinding under the Mediterranean sun. The terrace area also includes an external shower and toilet, while the large lower garden offers even more space for lounging or personal landscaping projects. Additional features include double-glazed windows with blinds throughout, providing comfort and energy efficiency. Ideally located within walking distance of the beach, this villa enjoys peace and privacy while being just a short drive from all amenities. The picturesque Duquesa Marina and seaside town of San Luis de Sabinillas are only 5 minutes away, with Gibraltar Airport just 25 minutes and Málaga around an hour's drive. A stylishly upgraded home in a prime location, perfect as a family residence or a holiday retreat. Come view with me!



Spécification:

Caractéristiques

Près du transport

Piscine

Private

Cote d'énergie

E

Vues

Pays

Jardin

Piscine

Jardin

Private

Cote d'émission de CO2

E

Paramètre

Proche des magasins

Près de la ville

Près des écoles

Parking

Covered

Plus d'un