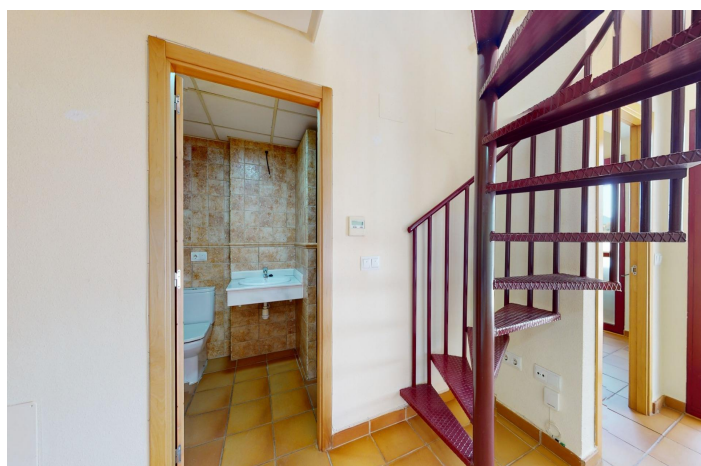
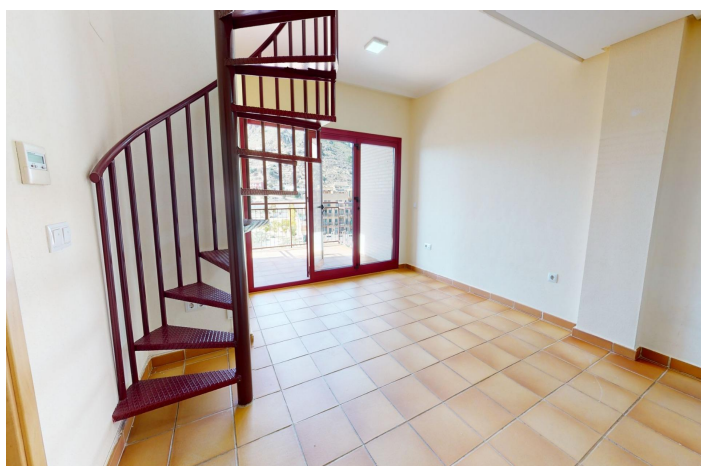
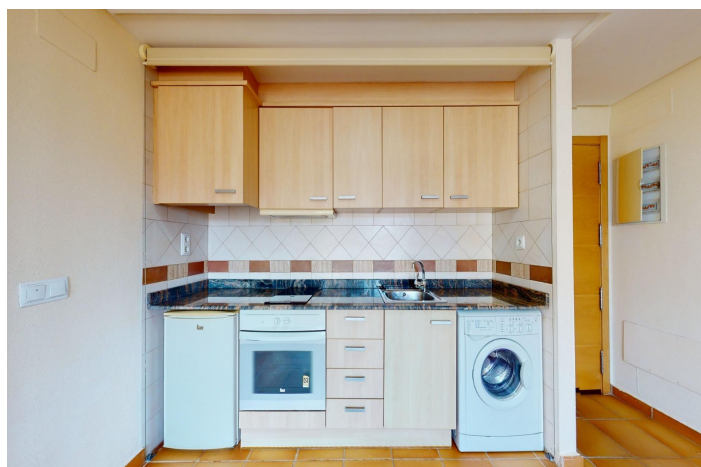




Penthouse for sale in Archena, Archena

160,000 €

Reference: N7236 Bedrooms: 2 Bathrooms: 2 Build Size: 80m² Terrace: 72m²





Valle de Ricote, Archena

BEAUTIFUL RESIDENTIAL COMPLEX NEAR ARCHENA Residential complex with 47 fully equipped apartments and penthouses near Archena. Beautiful properties with 1 or 2 bedrooms, apartments with spacious terraces and penthouses with private solariums featuring a barbecue, you can enjoy outdoor lifestyle living. Each property has parking space and storeroom. You will love exploring all the amazing common areas of this property! From the outdoor pool with a solarium, where you can sunbathe and take a dip on the hottest days, to the children's pool with its own play area and solarium, the little ones will also have a great time! If you prefer tranquility, the landscaped areas offer you an oasis of peace to read or take a walk. If you are looking for a place to relax and disconnect from the routine, let me tell you that the inland of Murcia Region is your perfect destination. Here, you can enjoy incredible landscapes at Ricote Valley, the Mediterranean climate, and a delicious gastronomy. Complex located 1 km from Archena city where we find all kinds of services such as restaurants, supermarkets, schools, medical centers, etc and 1km to Archena Balneary, with thermal pools where you can take a relaxing bath surrounded by nature all year round and with hotels and restaurants. And if you are a golf lover, you're in luck. Within a few minutes' drive, you will find some of the best golf courses in the region, such as Mosa Trayectum, Torre Pacheco or Altorreal Golf Club, with 18 holes. About 70km from Alicante International Airport and 50km from Corvera International Airport (Murcia).



Features:

Gym
Gated
Key Ready
Solarium: Yes
Double Bedrooms: 2
Beach: 60000 Meters

Parking - Space
Number of Parking Spaces: 1
Useable Build Space: 69 Msq.
Storage / Trastero
Terrace: 72 Msq.

Communal Pool
Near Schools
Air Conditioning: Pre-Installed
Elevator/Lift
Location: Rural, Urbanisation