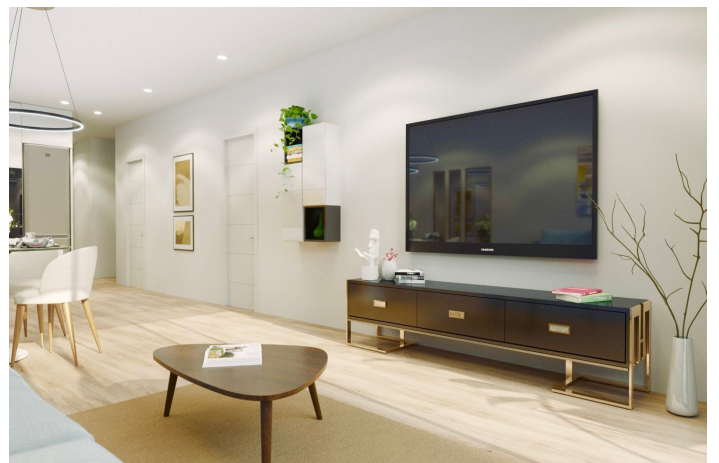




## Middle Floor Apartment for sale in Torrevieja, Torrevieja 335.000 - 395.000 €

Referenz: R4853203 Schlafzimmer: 3 Badezimmer: 2 - 3 Garten: 134m<sup>2</sup> - 148m<sup>2</sup> Terrasse: 3m<sup>2</sup> - 13m<sup>2</sup>





---

## Costa Blanca South, Torrevieja

Presents to you our exclusive new build project. The complex is located in a sought-after area in the Beach / City resort of Torrevieja second line to the Mediterranean Sea and the "Famous Paseo Maritimo" with its pavement cafes, traditional tapas bars, fresh fish eateries and much more. The complex consists of large luxury apartments 8 in total and 2 Penthouse apartments complete with private swimming pools. There is also a Communal pool and a Finish Sauna. The apartments have large living rooms, 3 spacious bedrooms and are fully equipped with walk in wardrobes / dressing rooms. There is also 3 or 4 bathrooms complete with heated floors and walk-in showers, large private terraces, ultra-modern kitchens with LED lighting throughout. The kitchen appliances will be of the top quality brand name BOSH. The bathroom sanitary ware and toilets are by the make Laufen (wall mounted). The apartments will have central air conditioning units from the brand MITSUBISHI. The Two penthouses will include spacious private solariums with BBQ with individual access to their own private swimming pools. There is also a communal area complete with another swimming pool, sauna, shower and BBQ for all owners to use. On the lower floor there is private parking available to purchase with remote controlled private closed garages. This is an excellent opportunity, so don't delay contact us today to reserve you property.



## Eigenschaften:

### Merkmale

Private Terrasse  
Badezimmer  
Einstellungsschränke  
Sauna  
Grill

### Ansichten

Meer

### Pool

Gemeinschaft

### Kategorie

Neuentwicklung

### Orientierung

Süden

### Einstellung

In der Nähe des Hafens  
In der Nähe des Meeres  
In der Nähe von Geschäften  
In der Nähe der Stadt

### Garten

Gemeinschaft

### Klimakontrolle

Vor installierte a/c  
U/f/h Badezimmer

### Zustand

Neubau

### Parken

Unterirdisch  
Privat