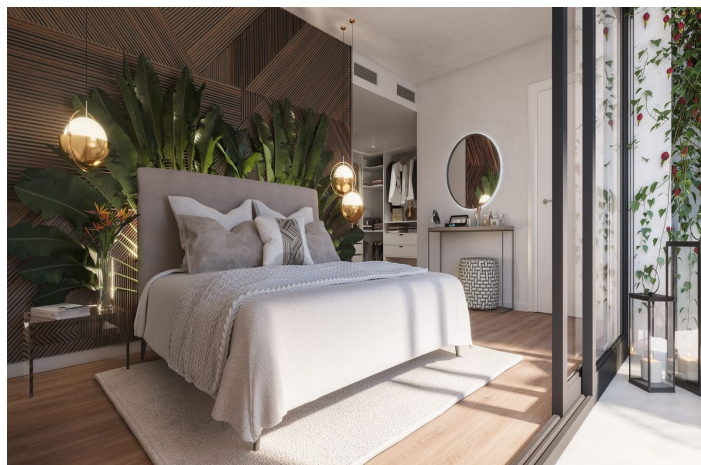




Detached Villa for sale in Sotogrande Alto, Sotogrande

1.100.000 €

Referentie: R4743592 Slaapkamers: 4 Badkamers: 4 Plotgrootte: 884m² Perceelgrootte: 200m² Terras: 300m²





Costa de la Luz, Cádiz

Introducing Villa Flora – A Sea View Villa in Prime Location Near Sotogrande We are proud to present Villa Flora, an exclusive off-plan villa project set on a spacious 884 m² plot in the highly sought-after area of La Paloma, just minutes from the prestigious Sotogrande. Surrounded by luxury residences and offering breathtaking panoramic sea views, this is a rare opportunity to build your dream home in one of Southern Spain's most desirable coastal enclaves. Total Project Price: Only €1,100,000 Includes 884 m² plot + turnkey construction cost. Become Your Own Property Developer With Villa Flora, you take full control of your investment. Upon completion, similar villas in the area are valued between €2,000,000 and €2,500,000, while comparable villas by other developers start at €1,500,000. This project empowers you to become your own developer, unlocking remarkable value and flexibility. Full Design and Build Flexibility Everything is custom-tailored to your lifestyle and vision: Bespoke architectural design Personalized interior and exterior finishes Control over budget, materials, and aesthetics Hands-on decisions throughout every phase of construction Create a home that truly reflects your personal style and needs. No Advance Payments – Pay As You Go Enjoy full peace of mind with a stage-based payment plan. You only pay after each construction milestone is successfully completed—ensuring transparency, trust, and quality at every step. Premium Location Located in the tranquil, fully developed community of La Paloma, the plot offers uninterrupted sea views and a peaceful, upscale environment. All neighboring properties are already completed, meaning no construction noise or disruption—just serenity and stunning surroundings. What's Included in the Price Our turnkey offer includes: 1,000 m² plot Full site excavation and preparation Reinforced concrete structure (AAC blocks – energy efficient) Exterior plastering and decorative finishes Interior finishes: flooring, painting, 1x1m porcelain tiles, bathroom tiling Electrical installation: sockets, switches, lighting, telecoms High-efficiency LED lighting (interior and exterior) Complete plumbing and high-quality sanitary fittings Full air conditioning system (Mitsubishi or Samsung) Aluminium carpentry (thermal break, matte black finish) Custom woodwork: interior doors, wardrobes, bathroom units Fully equipped kitchen with furniture and built-in appliances Swimming pool (6m x 4m) Exterior works: fencing, entrance gate, parking area IVA not included. Please note: Prices have increased by 5% since January 1, 2025. A Team You Can Trust With decades of experience, our expert team of architects, designers, project managers, and builders deliver outstanding homes—cutting out intermediaries to provide unbeatable market value. Villa Flora is not just a home—it's a smart investment, a creative journey, and a lifestyle upgrade. Contact us today to begin building your tailor-made villa with sea views near Sotogrande.



Kenmerken:

Extra's

Privé Terras

Berging

Sportschool

Sauna

Autoverhuur

Uitzicht

Garden Views

Pool Bekeken

Golf Bekeken

Forest Bekeken

Zwembad

private Pool

Tuin

private Garden

aangelegde tuin

Makkelijk te onderhouden tuin

Voorzieningen

Elektriciteit

Fotovoltaïsche zonnepanelen

Zonorientatie

North East Orientation

Ligging

Dichtbij golfbaan

Urbanisatie

Meubilering

Gedeeltelijk gemeubileerd

Beveiliging

24 -uurs beveiliging

Kluis

Categorie

Vakantiehuis

Investering

Golf

Luxe

Off Plan

Klimaatbeheersing

Centrale verwarming

Huidige Staat

Nieuwbouw

Keuken

Volledig ingerichte keuken

Parkeergelegenheid

private Parking

More Than One