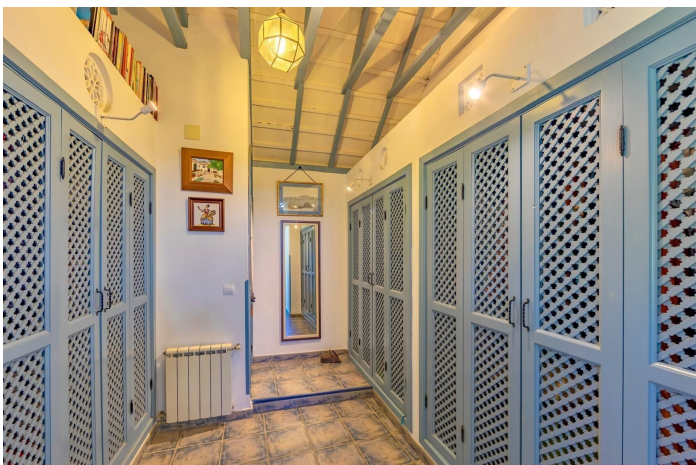




Finca - Rural Estate for sale in Tarifa, Tarifa

4,550,000 €

Reference: R4717666 Bedrooms: 6 Bathrooms: 6 Plot Size: 25,000m² Build Size: 496m²





Costa de la Luz, Tarifa

Farmhouse with views of the Strait of Gibraltar.

The location of this farmhouse is absolutely exceptional. It is located in the Strait Natural Park, where nature and views of the African coast are the protagonists. It is a privileged and unique place.

The house is built within a farm with an area of 2.5 hectares.

Its owners have been rehabilitating this beautiful house over the years until it is finally built and comfortable, having divided its spaces into 4 cozy homes.

The main house, which is the largest, has 3 large double bedrooms with en-suite bathrooms, kitchen - dining room and living room. From all its rooms there is access to the garden and they have panoramic views of the Strait of Gibraltar and the coast of Africa.

There are 3 more houses, independent of each other although they can be easily joined, each with its double bedroom, bathroom and kitchen-living room, from its large windows the landscape is imposed.

The garden is cared for in detail, with abundant plants and flowers that decorate it. There are 2 swimming pools, one 7 x 4 meters and the largest 12 x 4 meters. In the garden there is a cozy gazebo, rest area under the porch and an open patio.

It has 2 water wells and solar panels installed 5 months ago.

It is undoubtedly the location of the property that differentiates it from any other property, however the taste in the finish of the house, with details such as its ceilings with wooden beams, large windows, clay floors, or its bathrooms, make that this property is differentiable from any other and worthy of being on the cover of magazines.

On this occasion it can be said that until you are there you cannot truly appreciate it, no matter how many images we show of it, you have to see it, it is worth it.

The property is registered in the Property Registry.



Features:

Features

Private Terrace
Storage Room
Ensuite Bathroom
Guest Apartment
Guest House
Barbeque

Views

Sea

Pool

Private

Category

Beachfront

Orientation

South East

Setting

Beachside
Close To Shops
Close To Town
Close To Schools

Kitchen

Fully Fitted

Climate Control

Fireplace

Condition

Good

Garden

Private